

# LANO CARPETS

# LANO Company Profile

Family owned company – Flooring group

Established in 1920s

Complete production - Made in Belgium – By Lano :

- Yarn spinning – setting

- Tuft different gauges, structures

- Landscaping + Sportgrass

- Woven Axminster, Wilton

- Finishing continuous dyeing, Latex, different backing

- Own Laboratory, development, testing, Design-studio

- B2B

# LANO Company Profile

## Key figures

125,000,000€ turnover

10,000,000sqm

475 people

Worldwide sales

120,000sqm building

# LANO Company Profile

## Values

Customer service

flexible, high quality, reactivity

Green signature

minimum waste, recycling, solar panels

Specific – tailor made











# TUFT Contract- Hospitality

Commercial traffic class 31-32-33

Fire certificate CflS1-BflS1

Acoustics

Flexible : colors, roll-length

On-time shipping

Work with Architect/Hotel-group/International connection



# Tufted Nylon

Class 32-33

Fire certificate CfIS1-Bfls1

Cutpile – Looppile

ZEN

MINERVA

ODINA

# Halcyon

Class 31 - 32

BflS1

Boulevard

Jade

Illumina

# Carve

Nylon cut-loop LCL Class 33

1180gr

On FBP integrated acoustic felt

Hotelroom, cinema, office

## Carve Classic



R: 1,5 cm x 1 cm



▲ FBP: CFA.0100 | 400 cm



▲ FBP: CFA.0120 | 400 cm



▲ FBP: CFA.0251 | 400 cm



▲ FBP: CFA.0310 | 400 cm



▲ FBP: CFA.0530 | 400 cm



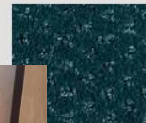
▲ FBP: CFA.0840 | 400 cm



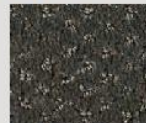
▲ FBP: CFA.0431 | 400 cm



▲ FBP: CFA.0241 | 400 cm



▲ FBP: CFA.0710 | 400 cm



▲ FBP: CFA.0821 | 400 cm



▲ FBP: CFA.0420 | 400 cm



▲ FBP: CFA.0280 | 400 cm



▲ FBP: CFA.0790 | 400 cm



▲ FBP: CFA.0810 | 400 cm



▲ FBP: CFA.0410 | 400 cm



▲ FBP: CFA.0291 | 400 cm

## Carve Linea



R: 121 cm x 130 cm



▲ FBP: LCFB.0042 | 400 cm



▲ FBP: LCFB.0251 | 400 cm



▲ FBP: LCFB.0431 | 400 cm



▲ FBP: LCFB.0182 | 400 cm



▲ FBP: LCFB.0192 | 400 cm



▲ FBP: LCFB.0410 | 400 cm



▲ FBP: LCFB.0840 | 400 cm



▲ FBP: LCFB.0122 | 400 cm



▲ FBP: LCFB.0241 | 400 cm



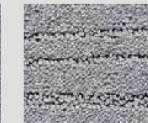
▲ FBP: LCFB.0192 | 400 cm



▲ FBP: LCFB.0821 | 400 cm



▲ FBP: LCFB.0012 | 400 cm



▲ FBP: LCFB.0852 | 400 cm



▲ FBP: LCFB.0812 | 400 cm



▲ FBP: LCFB.0722 | 400 cm



▲ FBP: LCFB.0442 | 400 cm



▲ FBP: LCFB.0802 | 400 cm





# Basalt Vintage

Nylon cut-loop

dull + shiny

Class 32 – BflS1





# Custom Contract- Hospitality

Specific technical demands

Test reports, Acoustics, Fire

Work with Architect/Hotel-group/International connection

Custom design/colors or Unique carpet

Made to Order, bigger Volume

Specific roll-lengths

# AXMINSTER

High end WOVEN

80% wool 20% Nylon

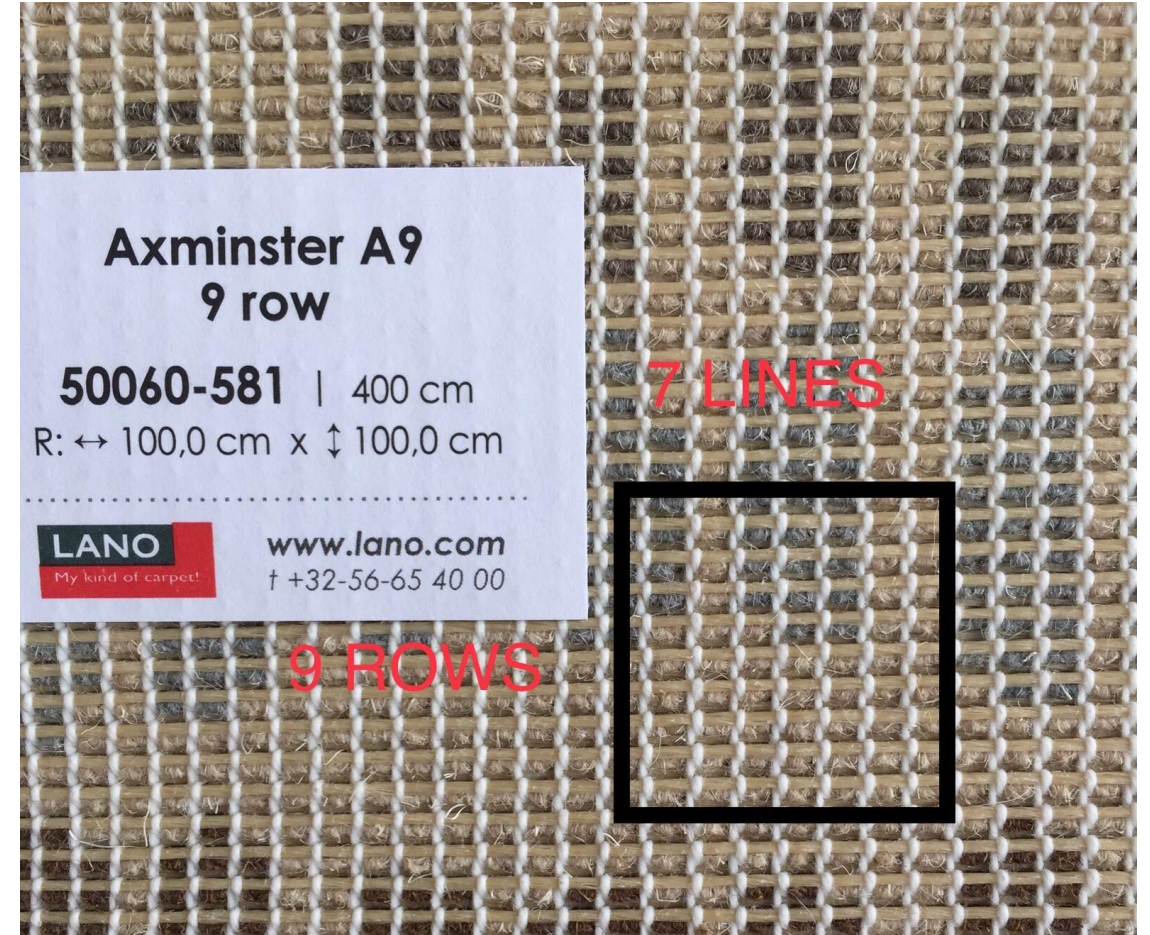
British and New Zealand

High performance Vandewiele looms

Made in Belgium

# AXMINSTER

Density = lines x rows / inch : 7x7 -> 7x11





# AXMINSTER

3ply Walk of Fame : 3 ends in 1 yarn

higher density

heavier

better point precision, better definition

all custom colors



2ply Metropole : standard program, 48 standard colors, custom colors possible

## Metropole

Standard colour ranges

Esme



Tori



Sara



# AXMINSTER

MOQ : 50sqm

Standard 400cm wide

Roll-lengths as specified

Up to 16 colors

Timing :

design development : PDF proposal

kibby sample 50x50 = visual (2-10 days)

possible mock-up room +/-24sqm (4-6 weeks)

production (6-8 weeks)

Design nr. AD022171

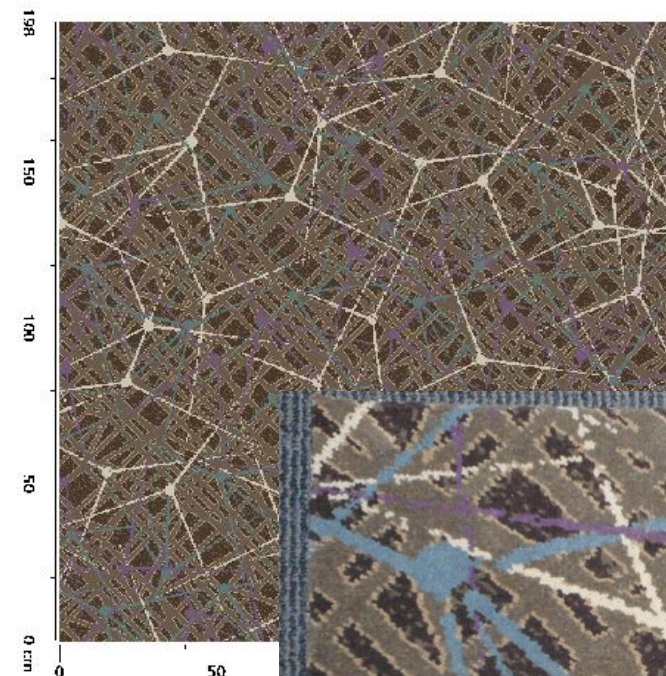
Lano

Carpet Solutions

Date : 2021-02-25

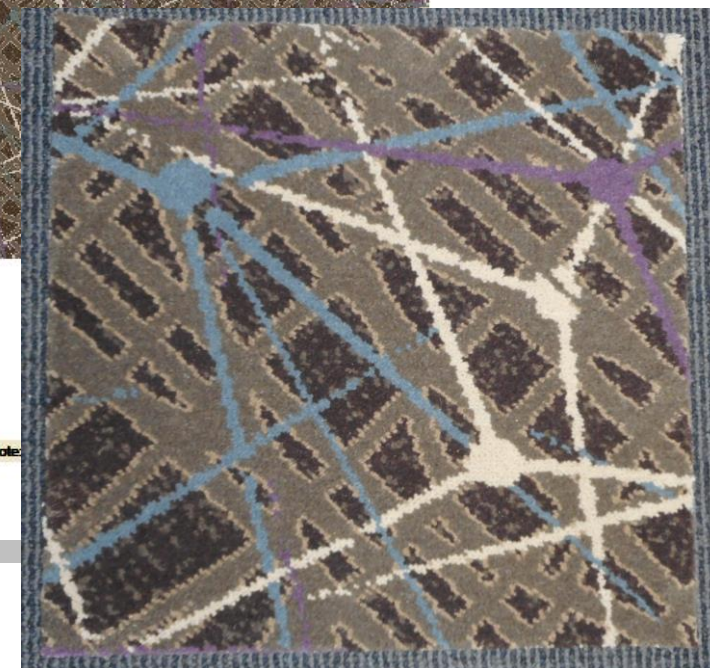
Quality / Code	Axminster / AX	Paper format	7 / 9
Image size (cm)	width = 200 , height = 198	Project nr	PRJ10264
Repeat size (cm)	width = 200 , height = 198	Area/Remarks:	
Colorbank			

7.7%	5.7%	26.7%	42.9%	10.4%	6.6%
24	30	41	44	50	54
E2599	E2601	T2542	T2544	T2541	T2718



Copyright Lano

Note:





# AXMINSTER

## Production Process

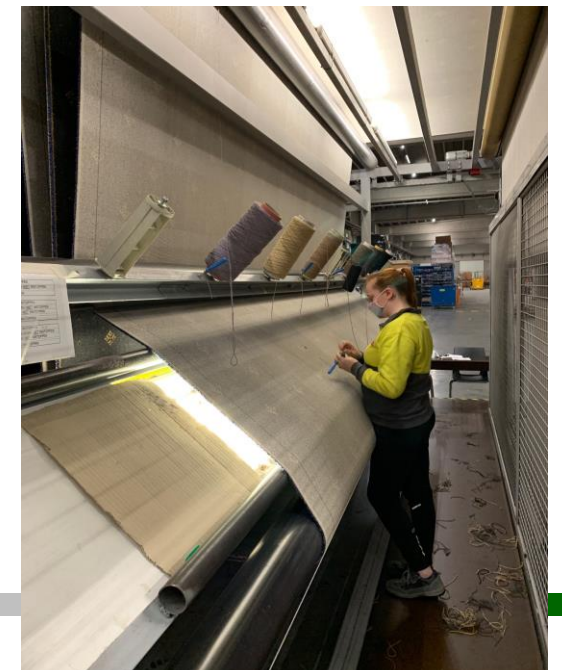
Dying of yarn

Specific length of bobbins (location on loom)

SmartCreel robots

1<sup>st</sup> quality control + mending: repairing missing yarn

Finishing : Latex backing + sheering





# SUITE 80-20

1100gr -1500gr SB - FBP

Heavy commercial traffic

Up to 4 colors (custom) or plain

Geometrical design

Design nr. COC271  
Date : 2017-04-03

Quality / Code	Scale / SJ	Paper format	B / 11
Image size (cm)	width = 44 , height = 53	Project nr	PRJ5030
Repeat size (cm)	width = 4 , height = 8	Area/Remarks:	
Colorbank			

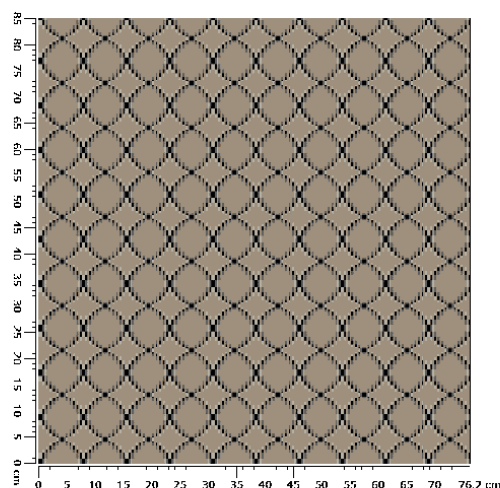
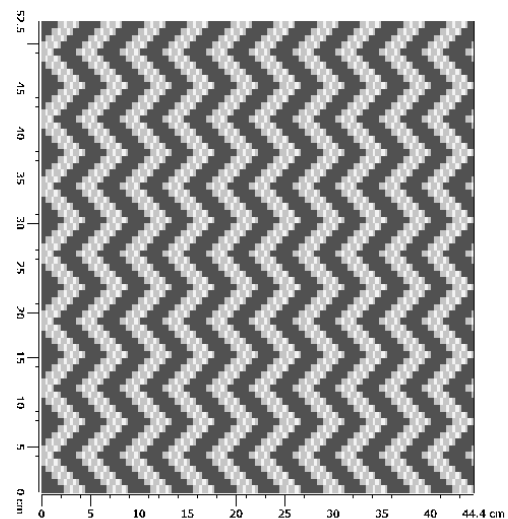
14.3%	35.7%	50.0%
17	18	10
SPEC	SPEC	SPEC

Design nr. COC331-A

Date : 2020-07-03

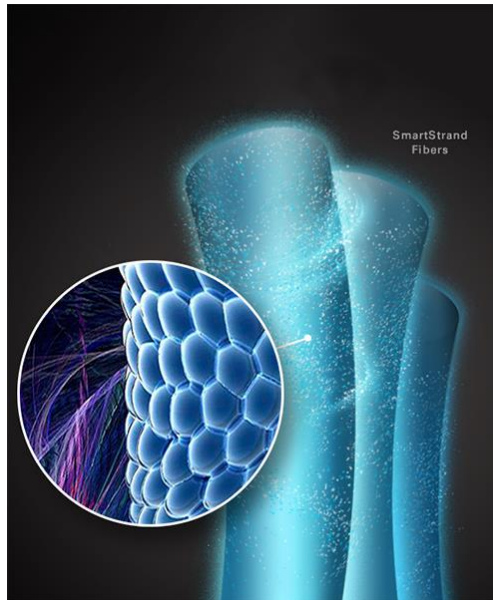
Quality / Code	Scale / SJ	Paper format	B / 11
Image size (cm)	width = 70 , height = 85	Project nr	0000
Repeat size (cm)	width = 8 , height = 8	Area/Remarks:	
Colorbank			

75.1%	8.3%	8.3%	8.2%
1	2	3	4
5383	5275	5000	5258



MOQ 400m<sup>2</sup>

# Tufted Triexta SMARTSTRAND



Perfectly cleanable

Green

Strong

Soft

Exclusive

Your ideal hospitality carpet

LOUNGE, DREAM, ROMANCE, CELESTE, BOHEME



# FOREVER · CLEAN

## Proprietary carpet protection system

The best way to avoid stains altogether is to keep dirt and spills from settling into the carpet and becoming stains.

**SmartStrand Forever Clean features Nanoloc™,** an advanced nanotechnology that completely encapsulates the SmartStrand fibre to create a superior spill and soil barrier.

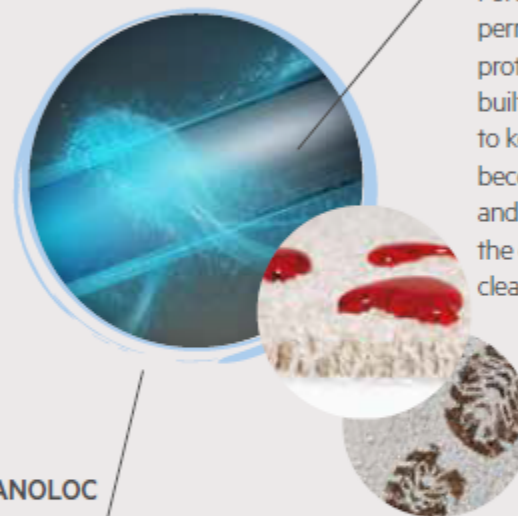
## Permanent built-in stain protection

SmartStrand Forever Clean is the only carpet with stain resistance built into the core of the fibre. Other carpets use temporary, topical protections that wash and wear off over time, which makes the carpet difficult to clean.

## Easier to clean

SmartStrand Forever Clean simply does not hold onto dirt. Through independent vacuum testing, SmartStrand Forever Clean has been shown to release up to 3x more dirt than other carpets. That means you can breathe easy knowing that your floor cleans up faster, better and more easily than any other carpet.

Nanoloc™



## BUILT-IN STAIN PROTECTION

Only SmartStrand Forever Clean has permanent stain protection that is built into the fibre to keep spills from becoming stains and to ensure that the carpet is easy to clean.

## NANOLOC SPILL SHIELD

Ultra-fine nano particles bond together on a molecular level to encapsulate the fibre with a complete spill and soil shield that makes SmartStrand Forever Clean the easiest carpet to clean





FOREVER · GREEN

## SmartStrand Forever Clean....

is made in part with annually renewable plant-based materials that minimize our usage of limited natural resources.

This also enables us to reduce our energy consumption in the manufacturing of all SmartStrand Forever Clean carpets. It's good to know you can have the beauty, softness and durability you desire in a carpet without compromising the beautiful earth around us.

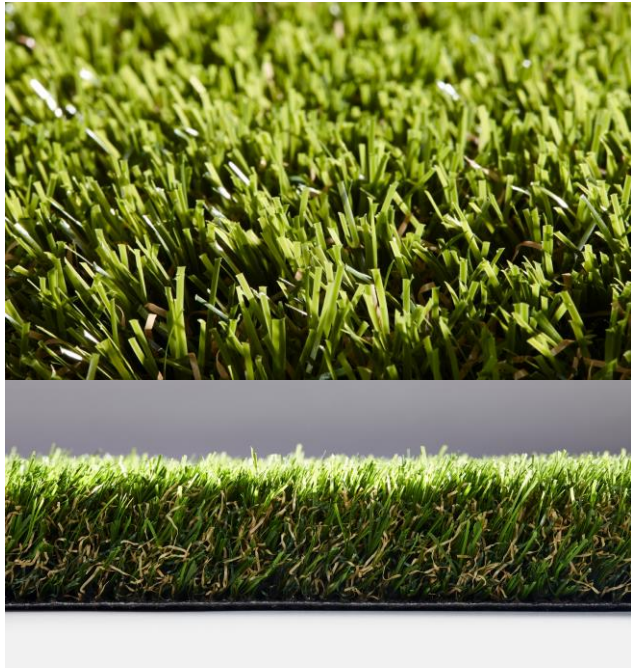
SmartStrand fibres are for 37% made with natural starch, leading to the most eco-friendly yarn available on the market today. The amount of energy required to produce the SmartStrand Triexta fibre is a full 30% less than with other fibres. The whole production process consequently emits 63% less CO<sub>2</sub> than is the case with other synthetic fibres.

The SmartStrand collection is made in Belgium by Lano Carpets, according to the most stringent quality requirements and following the appropriate ISO/Green signature control systems.

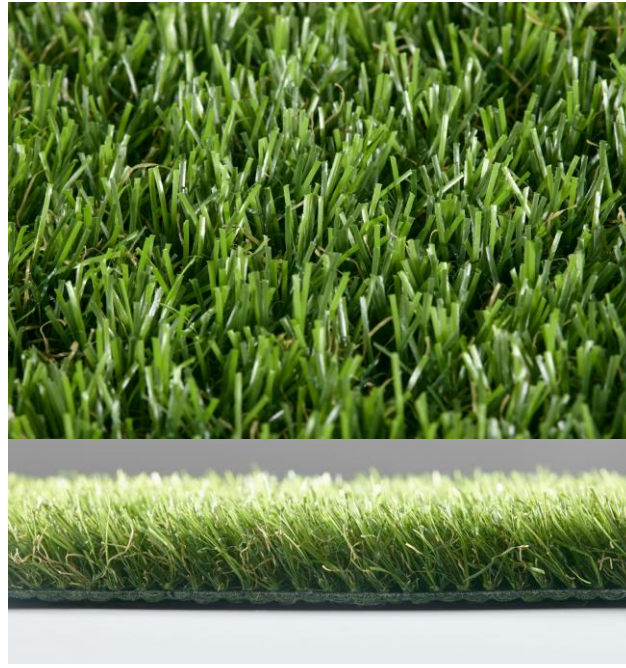


# Landscaping

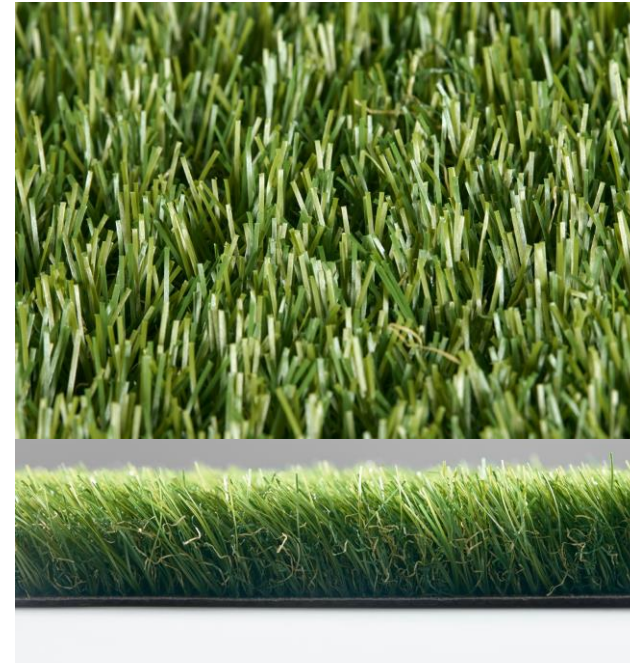
3-9 years warrantee, UV protection



Rosemary 38mm, 2000gr



Castor 30mm, 1100gr



Polaris 40mm, 1400gr



# Contact

[www.lano.com](http://www.lano.com)

Lano Carpets NV

Venetiëlaan 33

8530 Harelbeke

BELGIUM

Tel +32 56 65 42 00